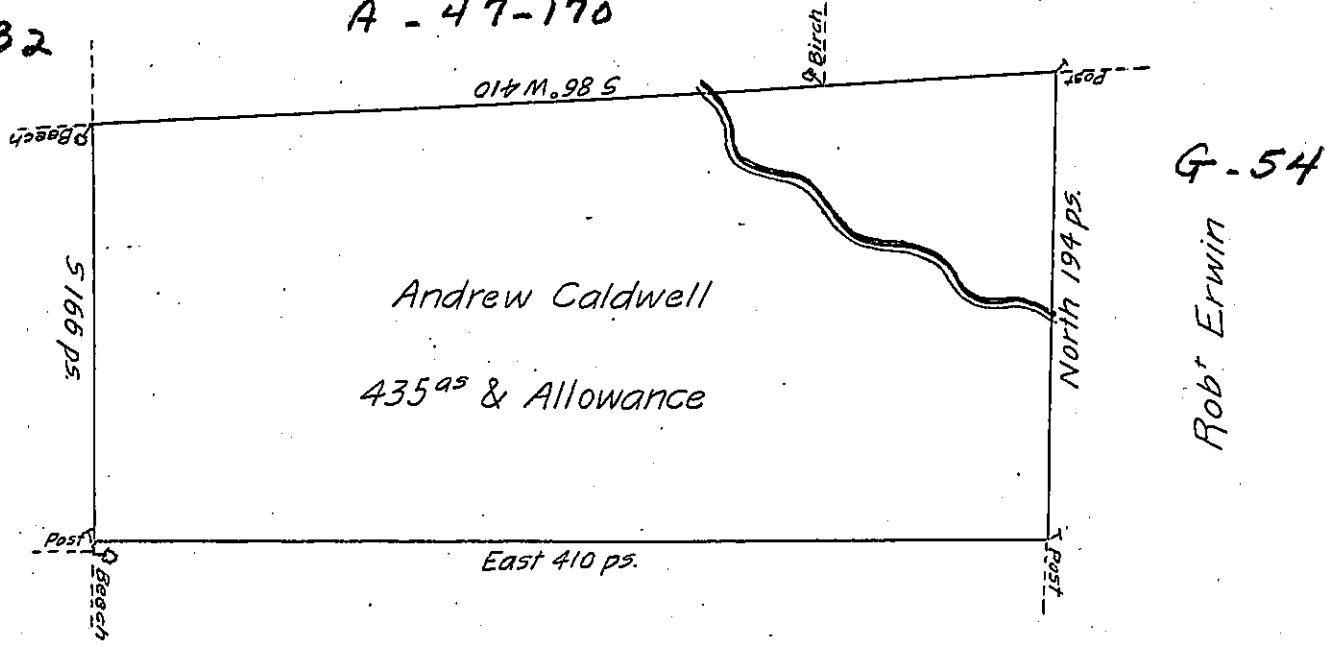


Mordecai Lewis
C-130-32

John Swanwick
A-47-170

Alex Nesbitt
A-20-21

D-39-171
Charles Jarvis



S-106

Joseph Gray
S-107

Draught of tract of land called Situate on a branch of

Choconut Creek, Joining Land Surv^d for Mordecai Lewis John Swan-
wick & others in Stoke Township North^d County Containing four Hun-
dred and Thirty five acres & Allowance of Six P Cent for roads &c
Surv^d for Andw Caldwell the 4th Day of August 1784 in pursuance
of a Warrant Dated the 2^d Day of July 1784 by

To W^m Gray D.S.

John Lukens Esq^r
Surv^r Gen^l

IN TESTIMONY that the above is a copy of the original remaining on file in the Department of Internal Affairs of Pennsylvania, made conformably to an Act of Assembly approved the 16th day of February, 1833, I have hereunto set my Hand and caused the Seal of said Department to be affixed at Harrisburg, this sixth day of May 1904

Geo. P. Brown
Secretary of Internal Affairs.